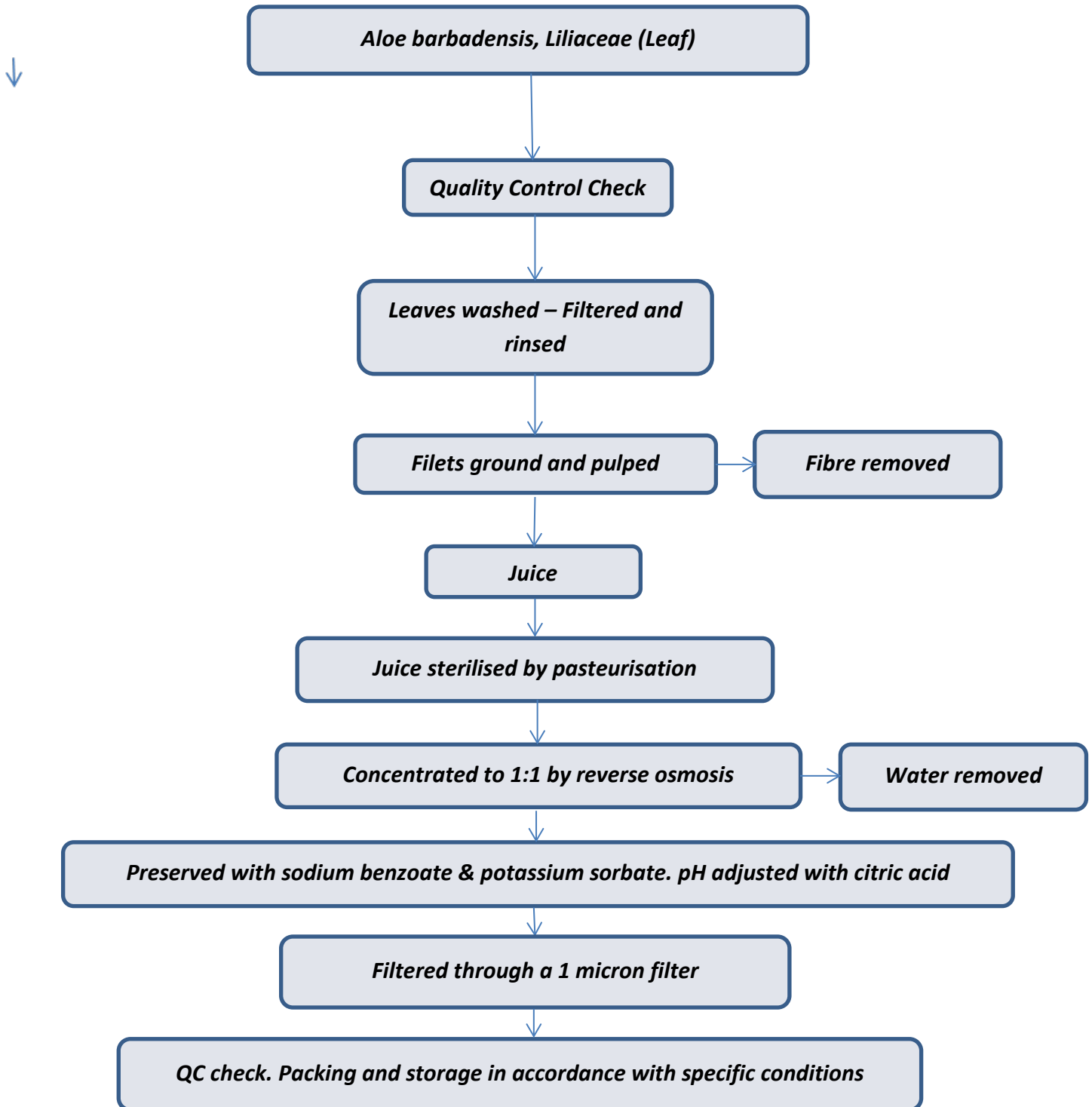


## Certificate of Analysis

PRODUCT DETAILS		
Product Name	<b>ALOE VERA JUICE 1:1 CONCENTRATE</b>	
Product Code	ALOEVE1001	
INCI Name	>75 to <100 Aloe barbadensis leaf juice >0.1 to < 1.0 Citric Acid <0.1 Sodium benzoate <0.1 Potassium sorbate	
Best Before Date	March 2025	
Batch Number	4498602	
Our Reference		
Manufacturing Process	This juice is expressed from the centre fillet of the Aloe plant, Aloe barbadensis liliaceae and reserved by the addition of Citric Acid, Sodium benzoate and potassium sorbate.	
Identification	CAS No: NA	EINECS No: 287-390-8
PHYSICAL AND CHEMICAL CHARACTERISTIC		
	SPECIFICATION RANGE	RESULTS
Appearance	Liquid	<b>Conforms</b>
Colour	Colourless to Amber	<b>Conforms</b>
Odour	Characteristic	<b>Conforms</b>
Specific Gravity @ 20°C	0.997 - 1.009	<b>1.005</b>
pH @ 20°C	3.5 - 5.0	<b>4.33</b>
Microbiological test (cfu/g)	<10.0	<b>Conforms</b>
Solids Content (%)	>0.5	<b>Conforms</b>
STORAGE AND SHELF LIFE		
Storage	Store in tightly closed container with minimum headspace in a cool,	
Shelf Life	24 months unopened and stored as above.	
<p><small><b>DISCLAIMER:</b> This information relates only to the specific material designated and may not be valid for such material used in combination with any other materials or in any process. Such information is, to the best of the Company's knowledge and belief, accurate and reliable as of the date indicated. However, no warranty, guarantee or representation is made to its accuracy, reliability or completeness. It is the users responsibility to satisfy himself as to the suitability of such information for his own particular use. Where Madar Corporation Limited make a declaration that allergenic material are not present in any product, this statement is made assuming reasonable levels of detection. It is impossible to guarantee the "absolute absence" of any material. It is the ultimate responsibility of the customer to ensure the safety of the intended final product containing this material, by carrying out additional tests if necessary.</small></p>		

## FLOW CHART ALOE VERA JUICE 1:1 CONCENTRATE





**SAFETY DATA SHEET**  
**ALOE VERA JUICE 1:1 CONCENTRATE**

**SECTION 1: Identification of the substance/mixture and of the company/undertaking**

**1.1. Product identifier**

<b>Product name</b>	ALOE VERA JUICE 1:1 CONCENTRATE
<b>Product number</b>	RMALOEVERA
<b>REACH registration notes</b>	REACH exempt - Mixture - a natural substance. Regulation (EC) No 987/2008, Annex II, paragraph 8.

**1.2. Relevant identified uses of the substance or mixture and uses advised against**

<b>Identified uses</b>	Cosmetic agent
------------------------	----------------

**1.3. Details of the supplier of the safety data sheet**

<b>Supplier</b>	Madar Corporation Limited 19 - 20 Sandleheath Industrial Estate Fordingbridge SP6 1PA Tel. +44 1425 655555 (Opening Hours Mon - Fri 9.00am - 5.00pm) Email - technical@madarcorporation.co.uk
-----------------	--

**1.4. Emergency telephone number**

**SECTION 2: Hazards identification**

**2.1. Classification of the substance or mixture**

**Classification (EC 1272/2008)**

<b>Physical hazards</b>	Not Classified
<b>Health hazards</b>	Not Classified
<b>Environmental hazards</b>	Not Classified

**2.2. Label elements**

<b>Hazard statements</b>	NC Not Classified
--------------------------	-------------------

**2.3. Other hazards**

**SECTION 3: Composition/information on ingredients**

**3.1. Substances**

<b>Product name</b>	ALOE VERA JUICE 1:1 CONCENTRATE
<b>REACH registration notes</b>	REACH exempt - Mixture - a natural substance. Regulation (EC) No 987/2008, Annex II, paragraph 8.

**SECTION 4: First aid measures**

**4.1. Description of first aid measures**

19-20 Sandleheath Industrial Estate, Fordingbridge, Hampshire, SP6 1PA, UK  
Tel: 01425 655555 Email: technical@madarcorporation.co.uk

## ALOE VERA JUICE 1:1 CONCENTRATE

<b>Inhalation</b>	Remove person to fresh air and keep comfortable for breathing. Get medical attention if any discomfort continues.
<b>Ingestion</b>	No adverse effects known. Drink warm water (30-40c) and seek medical attention if any discomfort occurs.
<b>Skin contact</b>	Remove contaminated clothing and rinse skin thoroughly with water. Get medical attention if any discomfort continues.
<b>Eye contact</b>	Rinse immediately with plenty of water. Remove any contact lenses and open eyelids wide apart. Continue to rinse for at least 15 minutes and get medical attention.

#### **4.2. Most important symptoms and effects, both acute and delayed**

#### **4.3. Indication of any immediate medical attention and special treatment needed**

### **SECTION 5: Firefighting measures**

#### **5.1. Extinguishing media**

<b>Suitable extinguishing media</b>	Use as appropriate carbon dioxide (CO <sub>2</sub> ), dry chemical or foam
<b>Unsuitable extinguishing media</b>	Do not use water jet as an extinguisher, as this will spread the fire.

#### **5.2. Special hazards arising from the substance or mixture**

<b>Specific hazards</b>	May produce Carbon Dioxide and unidentified organic compounds.
-------------------------	--

#### **5.3. Advice for firefighters**

<b>Protective actions during firefighting</b>	Cool containers exposed to flames with water until well after the fire is out. Do not inhale explosion and/or combustion gases. Use self contained breathing apparatus.
---	---

### **SECTION 6: Accidental release measures**

#### **6.1. Personal precautions, protective equipment and emergency procedures**

<b>Personal precautions</b>	Avoid contact with skin, eyes and clothing. Take care as floors and other surfaces may become slippery.
-----------------------------	---

#### **6.2. Environmental precautions**

<b>Environmental precautions</b>	Avoid the spillage or runoff entering drains, sewers or watercourses.
----------------------------------	---

#### **6.3. Methods and material for containment and cleaning up**

<b>Methods for cleaning up</b>	Absorb with liquid binding material (e.g sand, diatomaceous earth, acid or universal binding agents). Collect in closed and suitable containers for disposal. Wash spill site after material pick up is complete.
--------------------------------	---

#### **6.4. Reference to other sections**

<b>Reference to other sections</b>	For personal protection, see Section 8. For waste disposal, see Section 13.
------------------------------------	---

### **SECTION 7: Handling and storage**

#### **7.1. Precautions for safe handling**

<b>Usage precautions</b>	Apply good manufacturing practice and industrial hygiene practices. Keep containers sealed when not in use. Provide adequate ventilation. Do not eat, drink or smoke when using this product.
--------------------------	---

#### **7.2. Conditions for safe storage, including any incompatibilities**

<b>Storage precautions</b>	Store in tightly-closed, original container in a dry, cool and well-ventilated place. Keep away from heat, sparks and open flame. Protect from freezing and direct sunlight.
----------------------------	--

#### **7.3. Specific end use(s)**

19-20 Sandeheath Industrial Estate, Fordingbridge, Hampshire, SP6 1PA, UK  
Tel: 01425 655555 Email: technical@madarcorporation.co.uk

## ALOE VERA JUICE 1:1 CONCENTRATE

### SECTION 8: Exposure controls/Personal protection

#### 8.1. Control parameters

#### 8.2. Exposure controls

##### Protective equipment



##### Eye/face protection

Chemical splash goggles or face shield.

##### Hand protection

Chemical resistant gloves (PVC)

##### Hygiene measures

Good personal hygiene procedures should be implemented.

##### Respiratory protection

Generally unnecessary in a well ventilated area.  
If ventilation is insufficient, respiratory protection must be worn.

##### Environmental exposure controls

Avoid discharging into drains.

### SECTION 9: Physical and chemical properties

#### 9.1. Information on basic physical and chemical properties

Appearance	Liquid.
Colour	Colourless. to Amber.
Odour	Characteristic.
Relative density	0.997 - 1.009 @ 20°C

#### 9.2. Other information

##### Hydrocarbon Content

### SECTION 10: Stability and reactivity

#### 10.1. Reactivity

**Reactivity** The substance is stable under normal storage and handling conditions.

#### 10.2. Chemical stability

**Stability** Stable under the prescribed storage conditions.

#### 10.3. Possibility of hazardous reactions

**Possibility of hazardous reactions** None known.

#### 10.4. Conditions to avoid

**Conditions to avoid** Avoid heat, flames and other sources of ignition.

#### 10.5. Incompatible materials

**Materials to avoid** Strong oxidising agents. Strong acids. Strong alkalis.

#### 10.6. Hazardous decomposition products

**Hazardous decomposition products** None known.

### SECTION 11: Toxicological information

## ALOE VERA JUICE 1:1 CONCENTRATE

### 11.1. Information on toxicological effects

**Toxicological effects** No additional data available.

## SECTION 12: Ecological information

**Ecotoxicity** No negative effects on the aquatic environment are known.

### 12.1. Toxicity

### 12.2. Persistence and degradability

**Persistence and degradability** Expected to be readily biodegradable.

### 12.3. Bioaccumulative potential

**Bioaccumulative potential** Based on available data the classification criteria are not met.

### 12.4. Mobility in soil

### 12.5. Results of PBT and vPvB assessment

**Results of PBT and vPvB assessment** This substance is not classified as PBT or vPvB according to current EU criteria.

### 12.6. Other adverse effects

## SECTION 13: Disposal considerations

### 13.1. Waste treatment methods

**Disposal methods** Dispose of contents/container in accordance with national regulations.

## SECTION 14: Transport information

**General** The product is not covered by international regulations on the transport of dangerous goods (IMDG, IATA, ADR/RID).

### 14.1. UN number

Not applicable.

### 14.2. UN proper shipping name

Not applicable.

### 14.3. Transport hazard class(es)

No transport warning sign required.

### 14.4. Packing group

Not applicable.

### 14.5. Environmental hazards

**Environmentally hazardous substance/marine pollutant**

No.

### 14.6. Special precautions for user

Not applicable.

### 14.7. Transport in bulk according to Annex II of MARPOL and the IBC Code

**Transport in bulk according to Annex II of MARPOL 73/78 and the IBC Code** Not applicable.

## SECTION 15: Regulatory information

19-20 Sande Heath Industrial Estate, Fordingbridge, Hampshire, SP6 1PA, UK

Tel: 01425 655555 Email: technical@madarcorporation.co.uk

## ALOE VERA JUICE 1:1 CONCENTRATE

### 15.1. Safety, health and environmental regulations/legislation specific for the substance or mixture

**EU legislation** Regulation (EC) No 1272/2008 of the European Parliament and of the Council of 16 December 2008 on classification, labelling and packaging of substances and mixtures (as amended).

**Guidance** CHIP for everyone HSG228.

### 15.2. Chemical safety assessment

No chemical safety assessment has been carried out.

## SECTION 16: Other information

**Revision date** 29/09/2020

**Revision** 1

**SDS number** 5486

This information relates only to the specific material designated and may not be valid for such material used in combination with any other materials or in any process. Such information is, to the best of the company's knowledge and belief, accurate and reliable as of the date indicated. However, no warranty, guarantee or representation is made to its accuracy, reliability or completeness. It is the user's responsibility to satisfy himself as to the suitability of such information for his own particular use.

19-20 Sandihealth Industrial Estate, Fordingbridge, Hampshire, SP6 1PA, UK

Tel: 01425 655555 Email: [technical@madarcorporation.co.uk](mailto:technical@madarcorporation.co.uk)

# MYSTIC MOMENTS

## Product Specification

PRODUCT DETAILS	
Product Name	ALOE VERA JUICE 1:1 CONCENTRATE
Product Code	HEALOEVERAJUIC
INCI Breakdown	>75 to <100 Aloe barbadensis leaf juice >0.1 to < 1.0 Citric Acid <0.1 Sodium benzoate <0.1 Potassium sorbate
Country of Origin / Manufacture	UK from material of mixed origin
Tariff Number	13021970
Natural Status	A natural substance. Regulation (EC) No 987/2008,
Food Grade Status	This material is not suitable for food.
Kosher Certified	Not kosher certified
Halal Certified	Not certified for Halal.
GMO Declaration	To the best of our knowledge and from information received from our supplier, this product does not derive from genetically modified starting raw material, or additives that are derived from genetically modified organisms.
Manufacturing Process	This juice is expressed from the centre fillet of the Aloe plant, Aloe barbadensis liliaceae and reserved by the addition of Citric Acid, Sodium benzoate and potassium sorbate.
Identification	CAS No: NA EINECS No: NA
PHYSICAL AND CHEMICAL CHARACTERISTIC	
Appearance	Liquid
Colour	Colourless to Amber
Odour	Characteristic
Specific Gravity @ 20°C	0.997 - 1.009
pH @ 20°C	3.5 - 5.0
Microbiological test (cfu/g)	<10.0
Solids content (%)	>0.5
FRAGRANCE ALLERGENS	
None Present	
FOOD ALLERGENS	
None Present	
IFRA	
None Present	
STORAGE AND SHELF LIFE	
Storage	Store in tightly closed container with minimum headspace in a cool, dark and dry place.
Shelf Life	24 months unopened and stored as above.

**DISCLAIMER:** This information relates only to the specific material designated and may not be valid for such material used in combination with any other materials or in any process. Such information is, to the best of the Company's knowledge and belief, accurate and reliable as of the date indicated. However, no warranty, guarantee or representation is made to its accuracy, reliability or completeness. It is the users responsibility to satisfy himself as to the suitability of such information for his own particular use. Where we make a declaration that allergenic material are not present in any product, this statement is made assuming reasonable levels of detection. It is impossible to guarantee the "absolute absence" of any material. It is the ultimate responsibility of the customer to ensure the safety of the intended final product containing this material, by carrying out additional tests if necessary.





## Vegan and Vegetarian Statement

IDENTIFICATION	
Product:	Aloe Vera Juice 1:1 Concentrate
Cas No:	N/A
EINECS No:	N/A
STATEMENT	
<p>We, Madar Corporation Limited, from information received from our supplier, hereby declare that the material listed above is suitable for the following:</p> <p>Vegans (Excludes all animal derived products, including dairy, eggs, leather, bee products (beeswax and honey).</p> <p>Lacto Vegetarians (Same as vegan but allows milk products and bee products.</p> <p>Ovo Vegetarians (Same as vegan but allows egg products and bee products)</p> <p>It does not contain any animal ingredients or animal by products. No animal ingredients or by products are used in the manufacturing process.</p> <p>04/11/2020</p> <p>This document represents to the best of our knowledge and from information received from our supplier. It does not release the buyer from the obligation to carry out an examination of the goods received. All uses made by the buyer are done under their own responsibility.</p>	